

Where do you need safe drinking water?



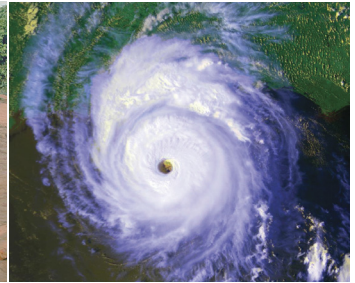
MILITARY THEATRE



REMOTE INDUSTRY



HUMANITARIAN AID



DISASTER PREPAREDNESS

Can Pure™

WATER PURIFICATION SYSTEM

Introducing the **Model #5**,
a compact, high output water
purification system capable of purifying
up to 19,000 litres of fresh water per day.



CAN PURE WPS - MODEL #5

13.2 LPM / 3.5 GPM / 19,051 LPD / 5,040 GPD

NSF 55, Class A Certified UV Disinfection,

6 Stages of Micro-Filtration with a Choice of Filter Configurations

DIMENSIONS: 0.585 x 0.585 x 0.735 m (23 x 23 x 29") WEIGHT: 37.65 kg (83 lb)

Optional Inverter Package for 12V DC Operation - 130 watts

Wide Selection of Optional Intakes, Hose Kits, Pumps, Chlorinators and Generators

- Please see reverse for more information -

Model #5

PATENT PENDING

Water Purification System

MODEL #5 - FEATURES & BENEFITS

High Output	Produce up to 19,051 LPD (5,040 GPD) of potable water from any fresh water source using the standard filter configuration. Optional filter arrangements for specialty applications and conditions.
High Efficacy	Eliminates a wide spectrum of turbidity, organics, micro-organisms, cysts, virus and bacteria.
NSF/ANSI Certified	Next generation, NSF/ANSI 55, Class A certified UV disinfection system.
Advanced Micro-filtration	6 stages of micro-filtration - meets or exceeds requirements of NSF/ANSI 53 for cyst removal.
Reusable filter cartridges	100% reusable, washable filters to reduce consumables.
Diesel / JP8 Power	Minimal electrical draw, no gravity or hazardous chemicals required. Optional diesel pump/generator available.
Easy to use and deploy	Highly portable, deployable and operable by just 1 untrained individual.

MODEL #5 - APPLICATIONS

Disaster Relief, Humanitarian Aid	Low cost - deploy more units to more locations. Easily transportable to remote regions. No special training or support required. Support up to 3,810 people / unit / day (5 L / person / day). Collapsible bottles available.
Rescue Teams, Military Theatre	Compact, rapid deployment, one system for all potable water - showers, kitchen, DECON, power tools, etc. Protect the health of critical rescue personnel. Storage bladders and hose packages available.
Urban Emergencies, Municipal Response	Compact, easily stored in fire halls and emergency shelters. Ideal response to boil water advisories during power outages and natural disasters when bottled may not be available. 1 person portable. Collapsible bottles available.

MODEL #5 - SPECIFICATIONS

*System Output / Production	Standard Filter Config: 13.2 LPM / 3.5 GPM (19,051 LPD / 5,040 GPD) with input of 15-19 LPM / 4-5 GPM @ 30-40 psi. <small>*Output may decrease w/ improper filter maintenance, inlet garden hose adapter, extreme conditions and/or a reduction in the volume/PSI of feed water.</small>
6 Stage, Advanced Micro-filtration System	100% washable and reusable pre-filters, high capacity sediment filters, organic trap for tannin and colour removal and high capacity 1 micron absolute filtration. Features include inlet shut off, pressure relief valve with cold weather circulation, clear view filter housings, digital flow meter and more. Optional items include next generation washable intake strainer and specialized cartridges for fine silt, hydrocarbons, taste/odour and more.
Next Generation UV Disinfection System	<ul style="list-style-type: none"> NSF/ANSI 55 Class A certified, UL Listed Canada and US. Dynamic flow restrictor and durable lamp with 2 year life span. UV intensity monitor with test of sensor button, real time display of UV dose, alarm history, lamp hours and more. Data logging - Direct to computer or download to any SD mini data card. Low UV alarm, lamp operation Indicator, audible alarm, visual alarm, low UV auto shut off.
Weight / Dimensions 37.65 kg (83 lb)*	Model #5: 37.65 kg (83 lb)* / 0.585 x 0.585 x 0.735 m (23 x 23 x 29") *Dry weight excludes case, filters and spares kit. Ship Weight & Dims with wood case & spares kit: 73.26 kg (161.5 lb) 0.66 x 0.66 x 0.99cm (26 x 26 x 39")
Electrical Requirements	130 watts, 120V AC. GFI cord set included. Optional 12V DC inverter package available for use with vehicles and solar applications. Optional diesel powered pump/12V generator available.
Hydraulic Requirements	For best performance supply with raw, feed water at the rate of 15-19 LPM / 4-5 GPM @ 30-40 PSI.
Inlet / Outlet	Inlet: 3/4" food grade female cam & groove. Outlet: 3/4" food grade male cam & groove. Includes garden hose adapter fitting for both inlet and outlet. Customized fittings and/or adapters available upon request.
Ships With	Includes spares parts and repair kit, GFI electrical cord, operating manual, inlet/outlet garden hose adapter fitting and reusable wood crate. Filters are not included—please choose from available packages. Consumables required will fluctuate with condition of raw water source, please contact your distributor for more information and customized supply kits.
Optional Accessories & Pre-Packed Kits Available.	Plug n' Play components and accessories are available including consumable kits, 12V DC inverter kits, electric, gasoline or diesel powered pumps, generators, food grade hose, water quality test kits, collapsible water bottles, portable water storage bladders, multi-line distribution pumps, and more.
Optional Ship/Storage Cases	Optional mil-spec, ship/storage cases available upon request.

CanPure™

WATER PURIFICATION SYSTEM

Model #5

The Can Pure WPS Model #5 provides the end user with the ability to treat fresh water sources contaminated with sediment, turbidity, dissolved organics, cysts, bacteria and virus through multi-barrier design incorporating a 6 stage micro-filtration system, proprietary organic trap and next generation, NSF/ANSI 55, Class A certified UV disinfection. Optional post chlorination treatment and testing solutions are available and highly recommended any time treated water is being stored and/or transported.

Model #5 offers end users an easy to use, plug and play water purification system with advanced design and safety features including:

- Washable pre-filters to reduce consumables.
- Proprietary organic trap to eliminate chlorination by-products such as THM's and eliminate colours resulting from tannins and organics.
- Polishing filter designed to remove turbidity and cysts such as Giardia and Cryptosporidium to NSF/ANSI 53 guidelines.
- NSF/ANSI Class A certified UV disinfection system with data logging capabilities, real time dosage sampling and lamp fault detection systems backed by a fully automated shut off solenoid in the event of a UV fault or low UV dosage.
- Trouble free variable area flow meter with optional digital unit with advanced features and capabilities.
- Optional carbon cartridges for the removal of tastes and odours.
- Optional, easy to use chlorination and testing solutions using NSF/ANSI 60 approved chlorination tablets.
- Optional next generation intake strainers, diesel and electric supply and distribution pumps, portable storage bladders, food grade suction and supply hose, collapsible bottles and spare parts and support kits.
- Rugged and reusable wood shipping/storage case.

Consumables & Operating Costs

Consumables are dependant on the quality of the raw water source being treated. Filter change outs can vary dramatically between sources and conditions (turbid river vs. clear lake, municipal water source, etc.). Filter life can be extended by delaying the time between filter changes (with reduction in output), choosing the best available water source or allowing highly turbid sources to naturally clarify via settling tanks or through the use of coagulants and/or flocculating agents.

A number of filter configurations are available to allow maximum flexibility and address the wide variety of water sources different end users may face. Please contact your distributor for more information and pricing.

Desalination & Heavy Metals

Please contact your distributor for more information regarding models and solutions designed to desalinate and reduce harmful contaminants such as heavy metals.

AUTHORIZED DISTRIBUTOR



6273 Paddler Way, Ottawa, Ontario Canada K1C 2G5

Phone: 613-834-9313 Fax: 613-834-4693
Email: fminduk@norleanstech.com

DESIGNED / MANUFACTURED BY

GLOBAL HYDRATION
WATER TREATMENT SYSTEMS INC.

PHONE: +001 (807) 577-0030
EMAIL: sales@globalhydration.com

FAX: +001 (807) 285-4852
WEB: www.globalhydration.com